

Spokane County Sheriff's Office

f^{lock} safety

Training & Certification





Real Time Crime Center

- Flock LPR Cameras
- Flock OS
- DroneSense
- BriefCam
- Milestone VMS / Live Video
- Spokane Sentinel – Third Party Video
- Camera Network
- RTCC Construction
- RTCC Operation



Real Time Crime Center



SCSO Flock Certification

15 question online test

Standardization

Prevent confusion during
volatile situations



Flock LPR Camera Overview



Flock Falcon LPR Cameras

Still Images Only – No Video

Owned, maintained, and
installed by Flock Safety

Falcon Flex Cameras (FOX) are
portable and can be
installed by SCSO staff



Flock Wing LPR Cameras

Live video AND still images for LPR

Owned, maintained,
and installed by SCSO

SR2 / Hayford eastbound,
westbound, and southbound
have Flock Wing LPR

I90 / Barker pending



Radar ALPR Trailers (RAT)



6 radar speed trailers (RATs) are outfitted with Flock Wing LPR Cameras



Camera on Wheels (COW)



2 retired patrol vehicles equipped with 6 cameras:

4 – 360 situational awareness

1 – PTZ for video

1 – PTZ for Flock Wing LPR

2 additional COWs being built now

2 more to be built in 2025



Axon Fleet 3

Dash cam captures 180 degree video and LPR

Currently installed in 2 SCSO DUI cars with 10 more coming soon



Spokane County Flock Network

Spokane County SO

42 fixed cameras

5 flex cameras

2 COWs

6 radar ALPR trailers

Liberty Lake PD

19 permanent cameras

Airway Heights PD

12 permanent cameras

Lowes Home Improvement

9 cameras at 3 stores



Lowes Cameras

Store 0172

5204 E Sprague Ave
Spokane Valley

Store 2793

16205 E Broadway Ave
Spokane Valley

Store 3045

6606 N Division

Lowes Home Improvement

9 cameras at 3 stores



Flock Camera Location Considerations

Limited to County Rights-of-Way

**City of Spokane and City of Spokane Valley
have not approved Flock cameras**

State routes are off limits

**Average daily traffic, time to next
intersection, other planned
cameras, high crime areas, etc.**



LPR Camera Orientation



LPR Camera Orientation

Almost always oriented to capture traffic traveling *AWAY* from the camera

Optimized to capture the *REAR* of the vehicle

MAY capture traffic from the opposing direction



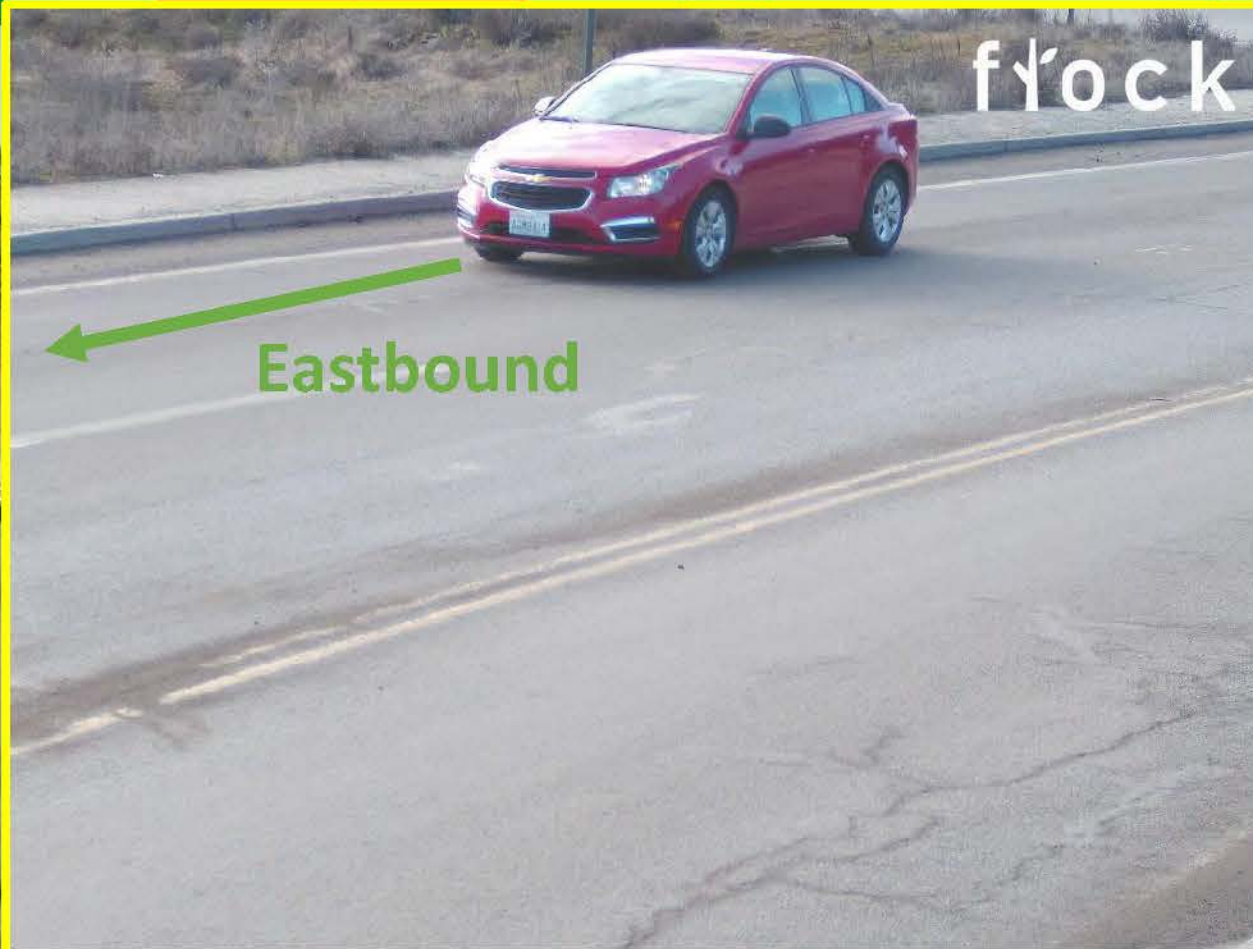
LPR Camera Orientation

#19 N Country Homes Blvd WB @ N Wall St



LPR Camera Orientation

#06 N Freya St WB @ N Market St



Spokane County WA SO-#06 N Freya St WB @ N Market St 47.73442741986096, -117.36565143873268
2/13/2024 14:15:33 PST



LPR Camera Location Overview



Flock Searches



Flock Search Reason

ALL searches of the Flock database must include a valid search reason!

User search history is maintained indefinitely and audited monthly



What is a valid search reason?

A search reason must give YOU enough information to recall why you ran the query, if asked



What is a valid search reason?

Good

- Case Number
- CFS Number
- Other reference #
- Specific Crime

Bad

- Investigation
- Crime
- x
- nanananananana
- My Ex Girlfriend



Flock Search Demonstration



Flock Searches

Practical Exercise #1



Practical Exercise #1

On 7/1/2024, you respond to an assault at 9107 N Country Homes Blvd (WA DOL) and learn the following:

- At approximately 1125, a frustrated citizen punched a DOL clerk in the face
- Witnesses report suspect fled in a red pickup with a toolbox and a sticker in the back window

Can you solve this case with Flock?





Spokane County WA SO-#18 N Wall St NB@N Country H 47.73640759331784 , -117.42175174547496
7/2/2024 11:30:15 PDT



Flock Searches

Practical Exercise #2



Practical Exercise #2

On 6/24/2024 at 1600, you respond to an alarm call at 10711 N Market St and learn the following facts:

- Warehouse alarm tripped at 1410
- Owner responded and reported warehouse door was forced open and five pallets of sod were missing from the warehouse
- Suspicious two-tone Subaru observed in the area



Can you solve this case with Flock?



flock



Spokane County WA SO-#05 N Market St SB@N Freya St 47.734182756144, -117.36548581232601
6/24/2024 14:20:46 PDT

flock



Spokane County WA SO-#05 N Market St SB@N Freya St 47.734182756144, -117.36548581232601
6/24/2024 14:55:12 PDT





47.73447060232433, -117.36525983621651
Spokane County WA SO-#07 N Market St NB @ N Freya St 6/24/2024 14:20:44 PDT





Spokane County WA SO-#06 N Freya St WB@N Market St 47.73442741986096, -117.36565143873268
6/22/2024 09:06:50 PDT



Flock Searches

Practical Exercise #3



Practical Exercise #3

On 2/19/2024, you are investigating a hit and run collision at Mead High School around 3pm. A witness provides this photo of the running vehicle:



Can you solve this case with Flock?



Flock Alerts



Alert Sources

NCIC

CPIC Data Records, Extreme Risk Protection Order, Gang or Suspected Terrorist, Missing Person, Protection Order, Protective Interest, Sex Offender, Stolen Plate, Stolen Vehicle, Supervised Release, Violent Person, Warrants



Alert Sources

NCIC

CPIC Data Records, Extreme Risk Protection Order, Gang or Suspected Terrorist, Missing Person, Protection Order, Protective Interest, Sex Offender, Stolen Plate, Stolen Vehicle, Supervised Release, Violent Person, Warrants

NCMEC

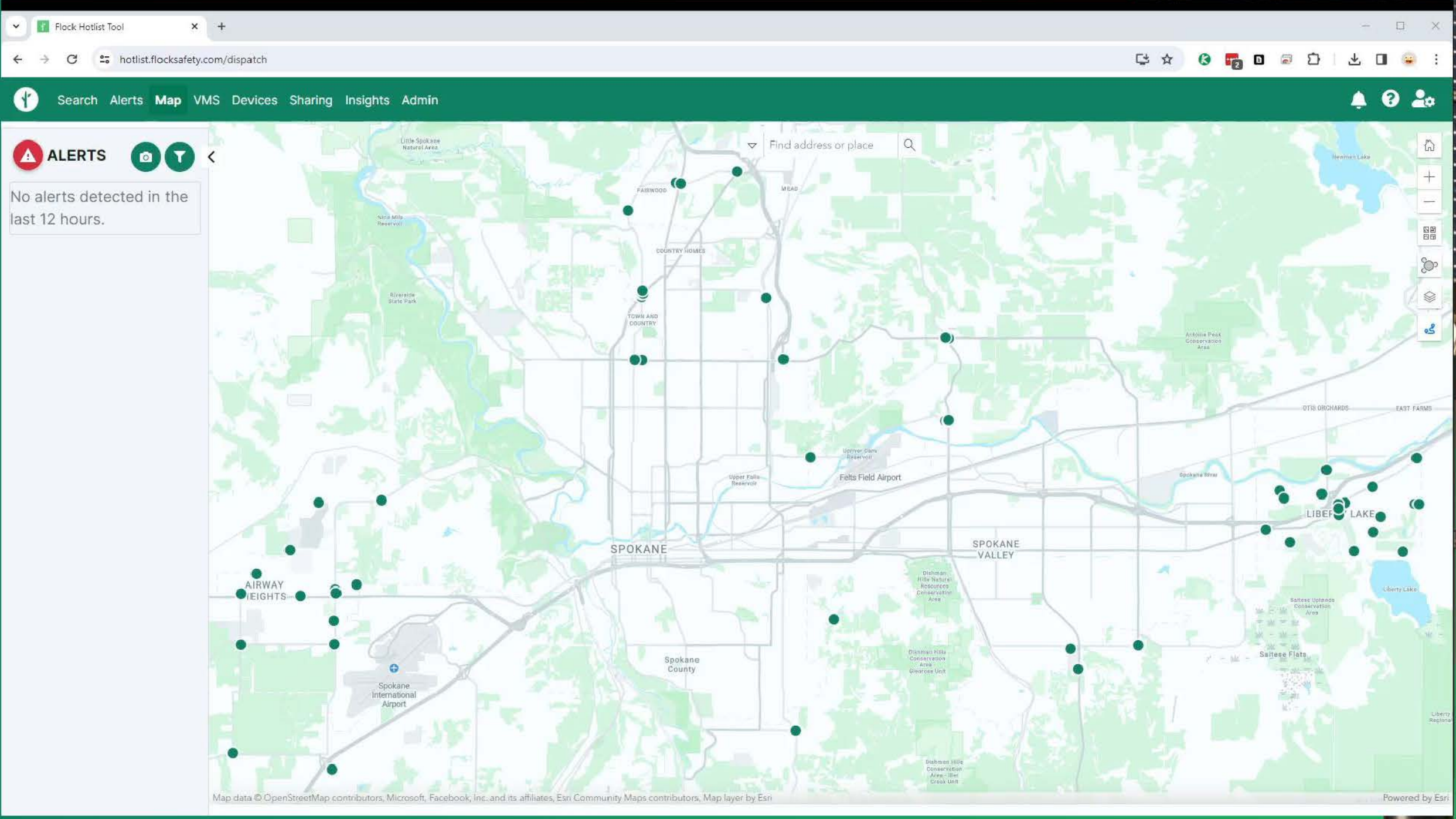
Amber Alert

Custom Hotlists



Flock Alerts Demonstration





Verification of Alerts

ALL alerts in Flock must be verified

Plate	WA CEK3001	Source	NCIC
Date	2/5/2024, 3:37:50 PM	Topic	Stolen Vehicle
	4 days ago	Description	GRY HOND ACC



Verification of Alerts

ALL alerts in Flock must be verified

Two types of verification must occur:

2. Verify the hit itself is valid and relevant:

- Check NCIC
- Is the hit stale?
- Do I have a legal reason to stop the car?



Alerts and Dispatch

Dispatch will broadcast Flock alerts
on a workload permitting basis

It is highly recommended to keep
Flock open to the Alerts or map page



There is a delay of up to 4 hours
for new NCIC entries to get to Flock

There is a delay of up to 4 hours
for cleared NCIC entries to be
removed from Flock



Custom Hotlists



Custom Hotlists

Global Hotlists

SCSO GLOBAL HOTLIST

SCSO WARRANT HOTLIST

Private Hotlists/Silent Notification

Investigative Units



Who can add and edit custom hotlist entries?

Dispatch
RIG9 / RTCC



What can go on the global hotlists?

1. Fresh Stolen Vehicles
2. Wanted Person – Warrant or PC
3. Wanted Vehicle – Hold for Evidence
4. Amber Alert, Silver Alert, or Missing Person
5. Hot calls / active incidents (Short-Term Use)
6. All entries must be actionable



Considerations when stopping a hotlisted vehicle

1. Is the alert still relevant?
2. Are you comfortable with the probable cause or reasonable suspicion?
3. Does driver match description of suspect?
4. YOU must determine if there is a valid reason to stop the car.
5. Flock is just a pointer.



LPR Considerations



Stolen Plates

Why should I care?



Missing Persons

Why should I care?



LPR Countermeasures



NOT FOR COMMERCE USE - PRIVATE MODE OF TRAVEL

NOT FOR COMMERCE USE - PRIVATE MODE OF TRAVEL

TIME CRIME CER

LPR Countermeasures



Live Video



Live Video Sources

1. Surveillance Trailers
2. Wing LPR Cameras
3. Spokane Valley Traffic Cameras
4. Third party video integrations
5. Sheriff's Office cameras



Sheriff's Office Cameras



Live Video Demonstration



Map Features



Ways to Access Flock



Ways to Access Flock

1. Web Browser: flocksafety.com
2. Windows App: windows.flocksafetyapp.com
3. iPhone App
4. Android App



Success Stories



2023 Flock Success Stats

150 total success stories

89 people arrested or charged

63 stolen vehicles recovered

13 suspect vehicles located

2 missing persons located



Success Stories

Documenting our success is critical
to ensure continued funding for Flock

Ensure the word “Flock” appears somewhere
In the CAD narrative of your incident

Email any win, no matter
how small to:

dbaunsgard@spokanesherriff.org



Certification Test

12 questions

Must pass with a score of 80% or higher

Test as many times as you need



Flock Certification Test

12A Test questions (includes polygraph questions)



<https://> 12A Test questions (includes polygraph questions)



Questions?

Dustin Baunsgard

dbaunsgard@spokanesherriff.org

(509) 601-4540

